



HEALTH DEPARTMENT UPDATE 12/19/23

(COVERS SEP 2023 TO DEC 2023)

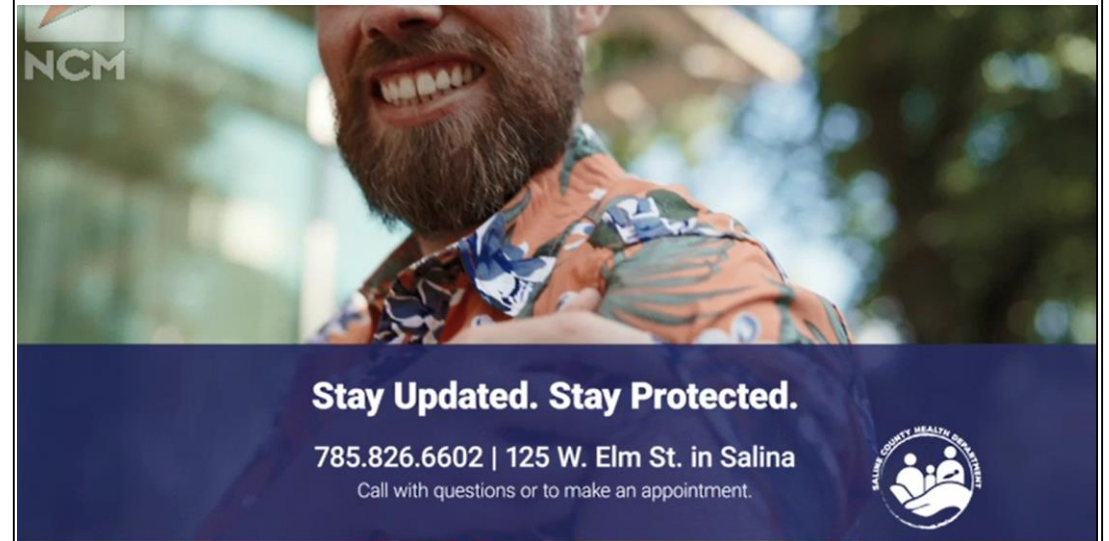
JASON TILLER, MS, CHES
DIRECTOR & HEALTH OFFICER

Health Education

- Anabel Graduated Leadership Salina
- Led two Mental Health First Aid trainings for HD staff; will have classes for open for all County Staff starting in the spring.
- New Opioid Dashboard on our website to be coming in the next couple of months – replacing our old dashboard



- Received 240 doses of Narcan from KDHE but due to Rx Only on the packaging, our only option was to distribute it to Salina Fire/EMS, Salina PD and Saline Co Sheriff.
- With the PIO, we have ads that play before movies at the theater on vaccine acceptance.



MCH

- Launch of new Becoming a Mom page on the HD website
- McPherson Co Safe Sleep Baby Shower for 26 families
- Saline County Crib Clinic
- Set up and Preparation for Incredible Babies parenting classes (scheduled to begin in March 2024)
- Implementation of Patagonia electronic health records for MCH
- New Program - Bosom Buddies
 - Assist MCH/WIC clients who are nursing with short term nursing needs

Childcare Licensing

- Child Care Surveyors across the state have been rebranded as Child Care Licensing Specialist.
- Conducted a training from nationally known trainer Beth Reeder for Child Care Providers.
- Hosted a student intern for job shadowing.
- Collaborated with local agencies in Saline and McPherson Counties to address ongoing childcare needs.

Clinic

- Community Flu Clinic in October gave out almost 400 flu shots
- Patagonia Electronic Health Record went live on December 11. This may cause some delay in appointments as many processes couldn't be fully evaluated until the system went live. Please have patience.
- We have flu vaccine, Covid vaccine and RSV vaccine. Call the clinic to see what's right for you and to make an appointment. 785-826-6602.

Home Health

- Launched Electronic Visit Verification as required by State
- Fully staffed now



Lead (Elevated Blood Lead)

- We investigate cases of elevated lead levels in blood in children and adults with the intent to reduce or remove the exposure and reduce the blood lead level.
- There is no safe level of lead.
- **Short term exposure** to lead could result in the following symptoms: headache; abdominal pain/colic; vomiting; anemia. **Longer term exposure** could result in the following additional symptoms: irritability; lethargy; fatigue; muscle aches or muscle prickling/burning; constipation; difficulty concentrating/muscular weakness; tremor; weight loss.

https://www.fda.gov/food/outbreaks-foodborne-illness/investigation-elevated-lead-levels-cinnamon-applesauce-pouches-november-2023?fbclid=IwAR3TKvCV0Wg_YOOJKycbaHh5M1o1713eQ9FZHOCjOdx fXpZX63XLL8f30E



Information for Providers: FDA Recall and Investigation of Cinnamon Applesauce and Puree Pouches

Product

- Recalled **WanaBana** apple cinnamon fruit puree pouches
- Recalled **Schnucks**-brand cinnamon-flavored applesauce pouches and variety pack
- Recalled **Weis**-brand cinnamon applesauce pouches

Symptoms of Lead Toxicity

Lead is extremely toxic to humans and can affect people of any age or status; however, children aged 6 and under are most at risk. Most children do not show obvious symptoms of lead poisoning. However, short-term exposure may result in symptoms such as headache, abdominal pain, and/or vomiting. Long-term exposure to lead, even at low levels, can cause irreversible damage to hearing, growth, and development including behavior problems, learning difficulties, and poor performance in school.

The only way to know if a child has been exposed is to get a blood lead test.

Recommendations

- Clinicians are asked to talk with parents/guardians, particularly of young children, about consumption of the recalled cinnamon applesauce and puree pouches.
- Educate parents/guardians about the recall due to high lead levels and recommend that they stop serving the products. Parents/guardians are advised to dispose of any remaining products.
- Order a venous blood lead test as soon as possible if a child has consumed these products.
- For more information [visit the FDA's website](https://www.fda.gov/food/outbreaks-foodborne-illness/investigation-elevated-lead-levels-cinnamon-applesauce-pouches-november-2023).



Academic Partnerships

- Had our fall KU MPH Intern complete her internship.
- Attended the KU MPH and KSU MPH Advisory Board meetings.
- Intent to publish at the end of January after final review by the Health Department Advisory Council.

Saline County Health Department

2023 Annual Report



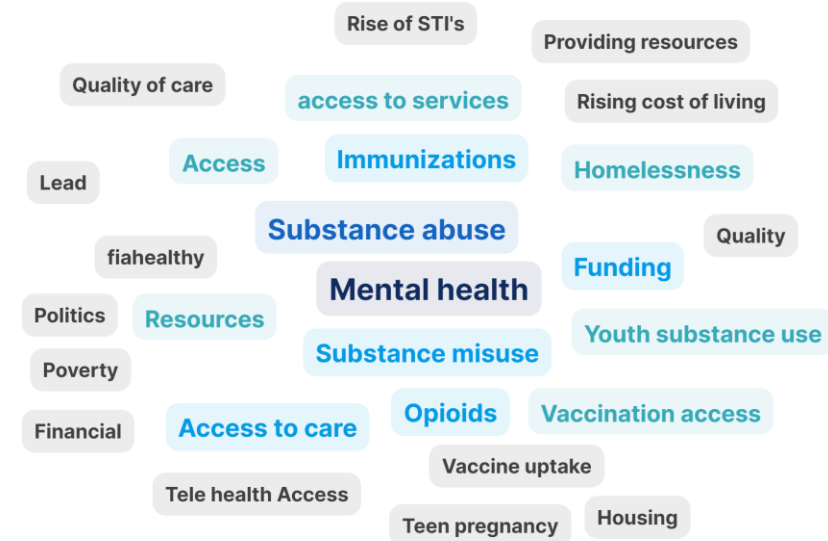
“Healthy families. Strong communities.
Building our future together.”

Director

- Stepped out of the KALHD Board President role after 18 months and now the Past-President for 2024
- Panel at KAC – Elevating our Communities through Public Health
- Attended the National Healthcare Coalition Preparedness Conference

What are the top 3 priorities regarding your community residents health and well-being that keep you up at night?

Wordcloud Poll 71 responses 25 participants



slido

Health Dept Budget

- As of the end of November 2023:
 - 95% of our budget compared to 89% at this same time last year.
 - However:
 - Current Revenue end of November 2023 \$2,675,596
 - Current Expenditures end of November 2023 \$2,714,577

Questions

—— SALINE COUNTY ——



**PUBLIC HEALTH
EMERGENCY
PREPAREDNESS**



Questions